

ZAVIO Indoor Box Camera

Quick Installation Guide

Quick Installation Guide

Please follow the installation steps below to set up your IP camera.

Check the package contents with the list below. **See P.2**

Physical overview. **See P.3**

I/O Terminal Block Circuit. **See P.4**

I/O Terminal Block Pin Definition. **See P.4**

LED Indicator Definition. **See P.4**

Installation of hardware and connection of all cables. **See P.5**

Windows: Go to Zavio website and download Camera Installation Tool. **See P.7**

Access the IP Camera using Camera Installation Tool. **See P.7**

MAC OS: using Safari Browser. **See P.10**

Lighting environment. **See P.12**

Change language of the web interface. **See P.12**

Application of IP Camera. **See P.13**

Package contents

Camera	IP camera
Quick Installation Guide	Brief product information and quick installation
Accessory	Hex screw driver C-mount to CS mount adapter

Software

The following software and information are available online:

- Video Management Software
- Camera Installation Tool
- User manuals
- Camera Language Packs

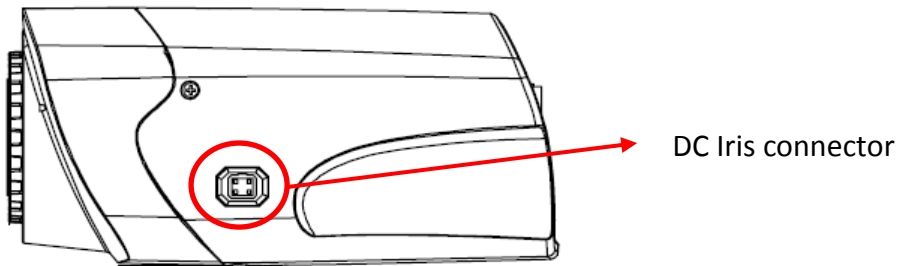
Download the above at <http://www.zavio.com/downloads.php> or scan QR-Code.



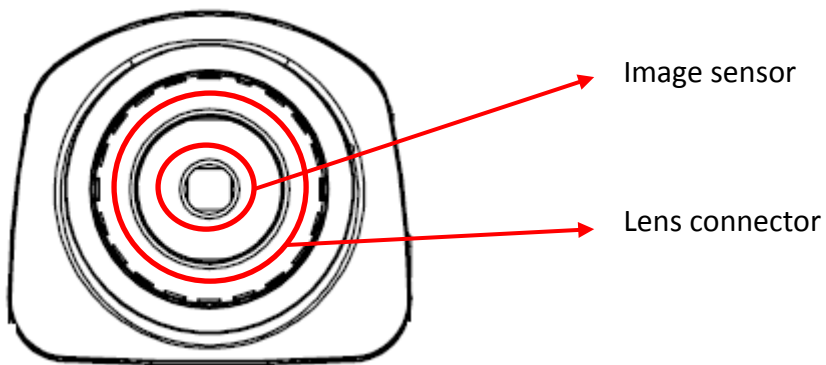
To activate Video Management Software, please enter the license key below.

Physical overview

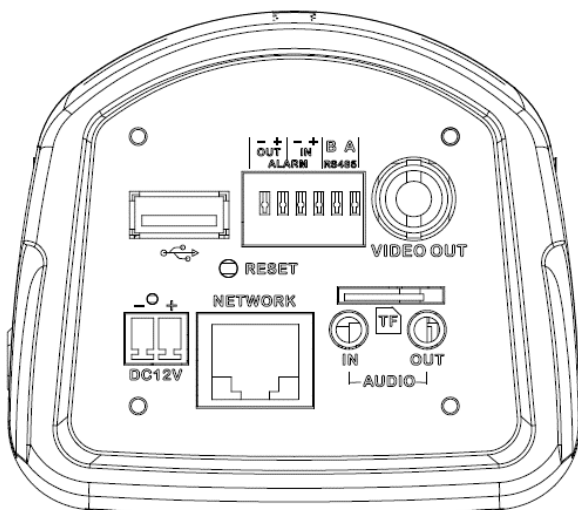
— Side —



— Front —



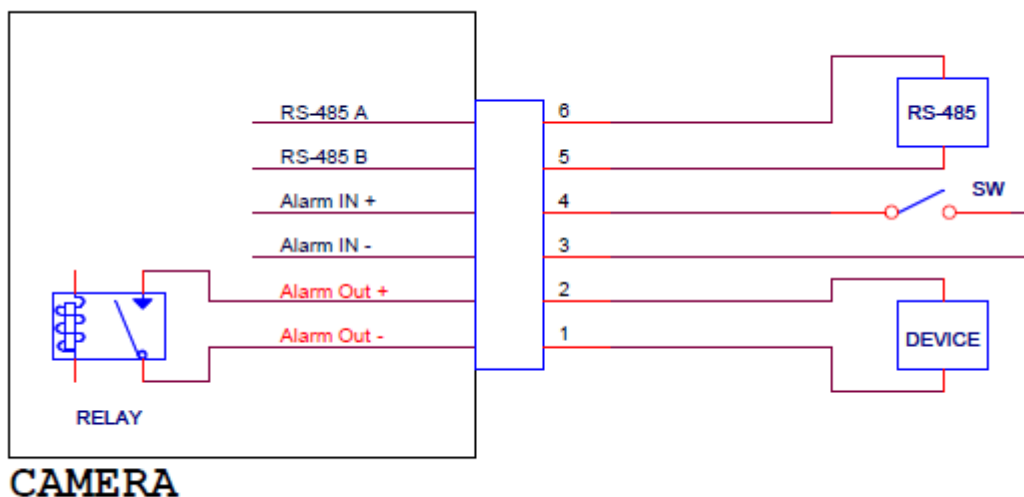
— Rear —



Reset:

When the device is powered, press the reset button to reboot the device, or hold the reset button for 5 seconds to restore to factory settings.

I/O Terminal Block Circuit



I/O Terminal Block Pin Definition

PIN	Definition	Description	Max. V/A
Out +	Alarm Out +	Relay contact output.	0.3A at 125V AC or 1A at 30V DC
In +	Alarm In +	Connected to GND to activate, or leave floating (or unconnected) to deactivate.	5V DC / 50mA

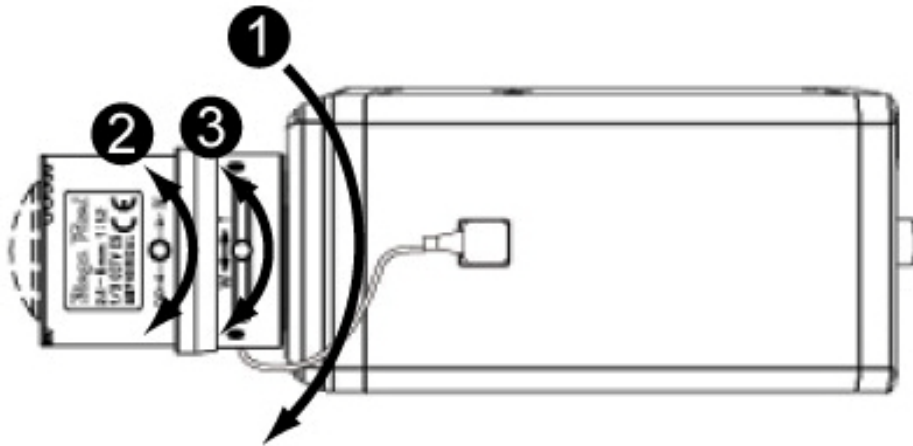
LED Indicator

LED	Color	Indication
Network	Green	Solid green when network is established.
	Orange	Blink orange when there is network activity.

Install the hardware and connect all cables

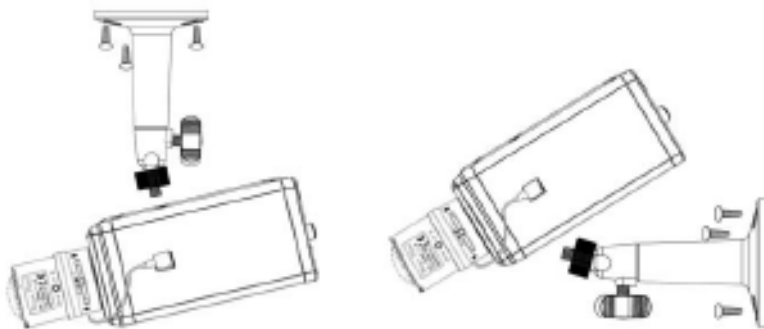
A. Mounting the lens to the camera

- a) Mount the lens by turning it clockwise on the camera until it stops.
- b) Unscrew the focus controller to adjust to the desired focus.
- c) Tighten the focus controller when finished.



B. Wall and Ceiling mounting

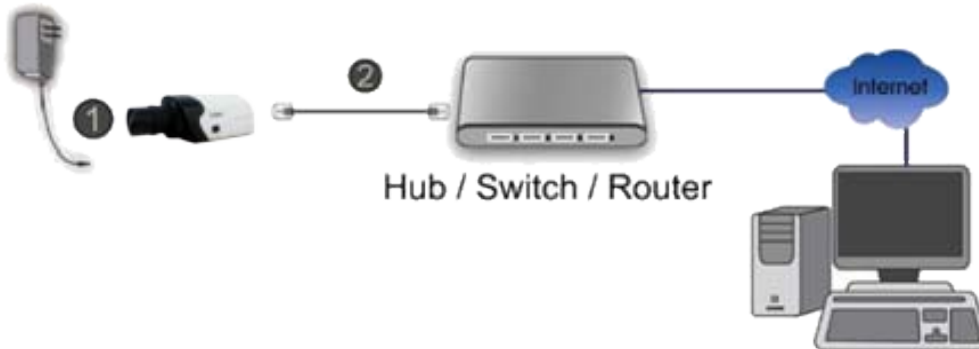
- a) Fix the base plate to a flat surface with the three supplied screws.
- b) Loosen the lock ring to adjust the desired angle of the camera.
- c) Tighten the lock ring.



C. Connect all cables

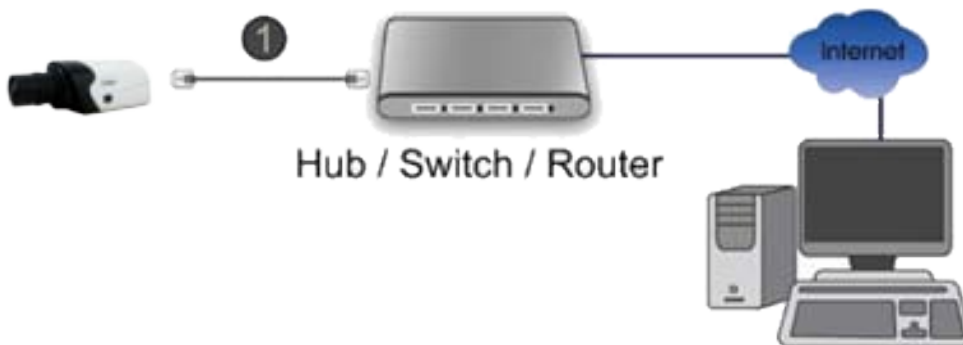
C1. Without Power over Ethernet (PoE) connection

1. Connect the power adaptor to the IP Camera.
2. Use a standard RJ-45 network cable and connect the IP Camera to a hub/switch/router.



C2. Power over Ethernet (PoE)

1. Use a standard RJ-45 network cable and connect the IP Camera to a PoE-enabled hub/switch/router.



C3. Wireless connection

1. Connect the power adaptor to the IP camera.
2. Insert Wi-Fi Dongle.
3. Connect to Wi-Fi.




Windows: Go to Zavio Website and download Camera Installation Tool

Please go <http://www.zavio.com/softwaredownloads.php> download “**Camera Installation Tool**”. And follow the installation process to complete the installation.

Downloads » Software Downloads

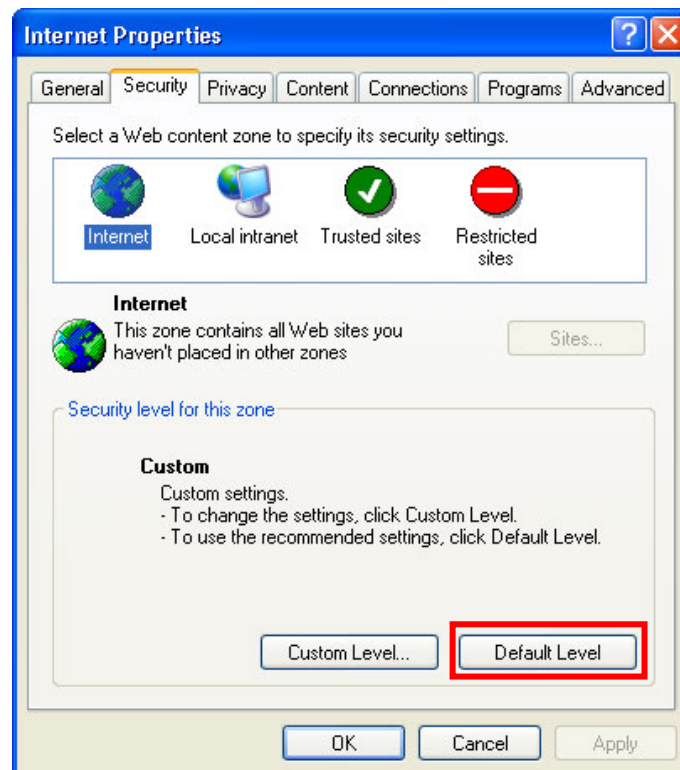
< Downloads

- Downloads
- Software Downloads**
- EOL Products Downloads

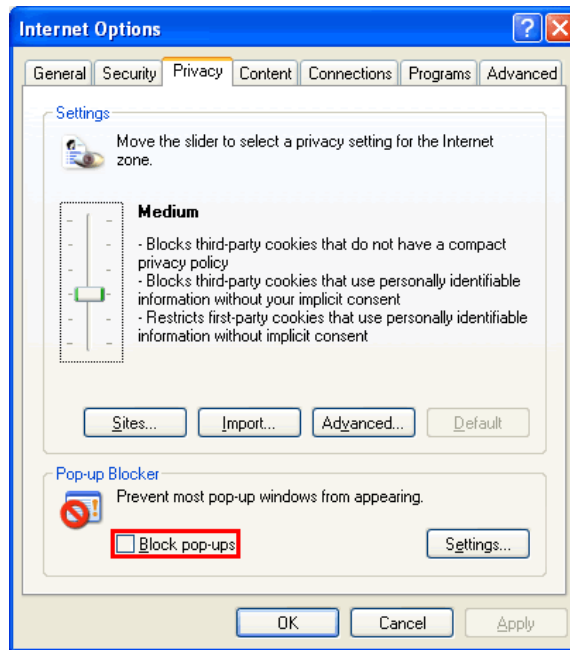
Software Support		
ZAVIO 8ch/16ch Standalone NVR CMS	+	Updated 2015-01-26
ZAVIO CamGraba 64-channel NVR Software 	+	Updated 2014-06-16
ZAVIO CamGraba 64-channel NVR Software Release Note	+	Updated 2014-06-16
ZAVIO CamGraba 64-channel NVR Software Datasheet	+	Updated 2014-07-04
ZAVIO CamGraba 64-channel Software User Manual	+	Updated 2014-06-17
ZAVIO CamGraba 64-channel Software Device Packs	+	Updated 2015-07-03
ZAVIO Camera Installation Tool	+	Updated 2015-02-26
Get to know ZAVIO Camera Installation Tool in 2 Minutes	+	Updated 2015-04-29
ZAVIO NVR Support List	+	

Access the IP Camera using Camera Installation Tool

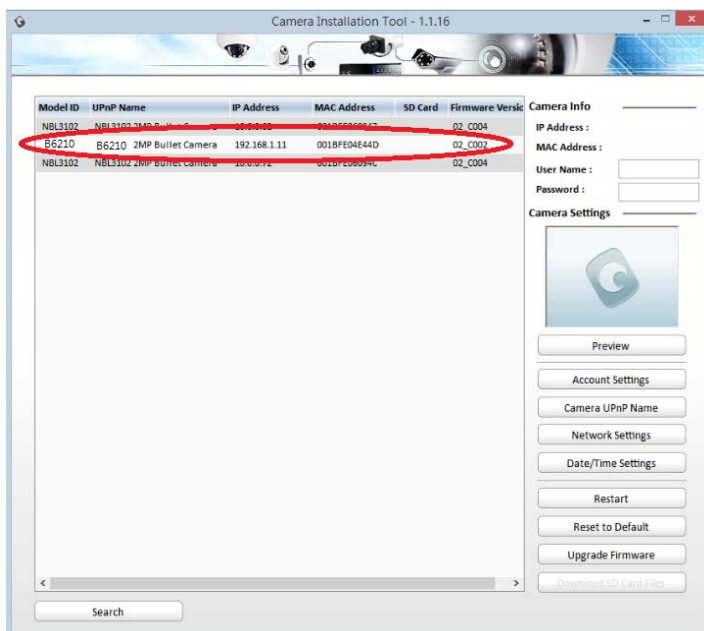
1. Please check two settings before using Camera Installation Tool.
 - a. Browser's Internet Properties → Security → **Default Level**



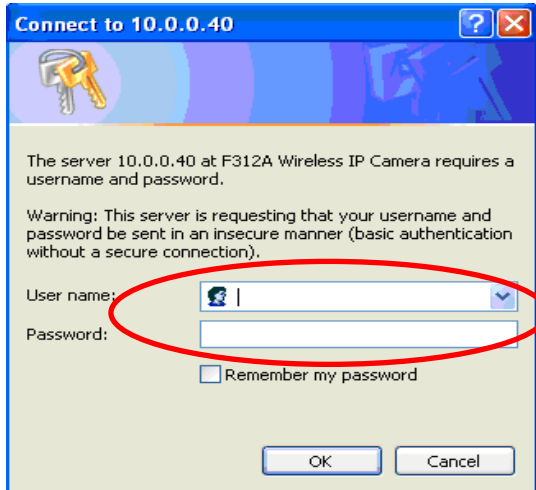
b. Browser's Internet Properties → Privacy → Uncheck **Pop-up Blocker**



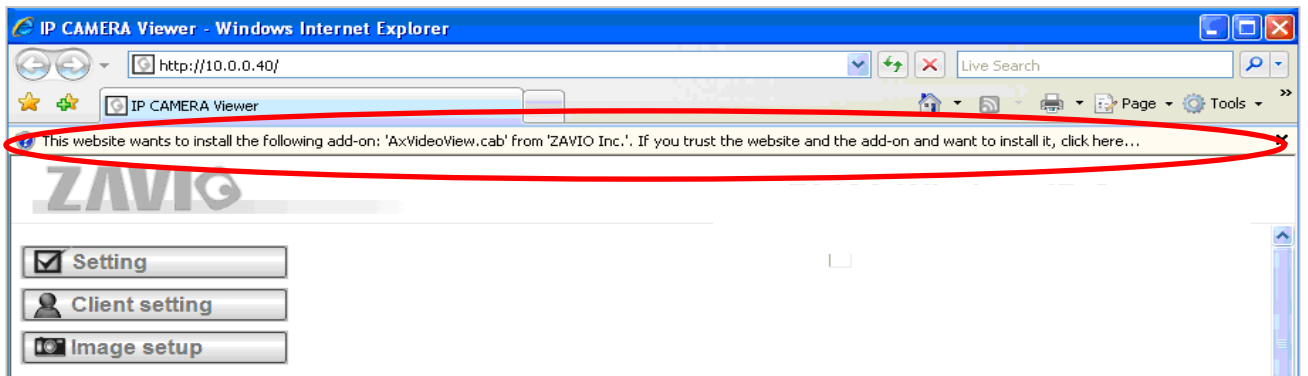
2. Click the Camera Installation Tool Icon on your desktop. The main page will show up listing all active camera and video server devices. Select the desired IP cameras from the list and click **Link to IE**.



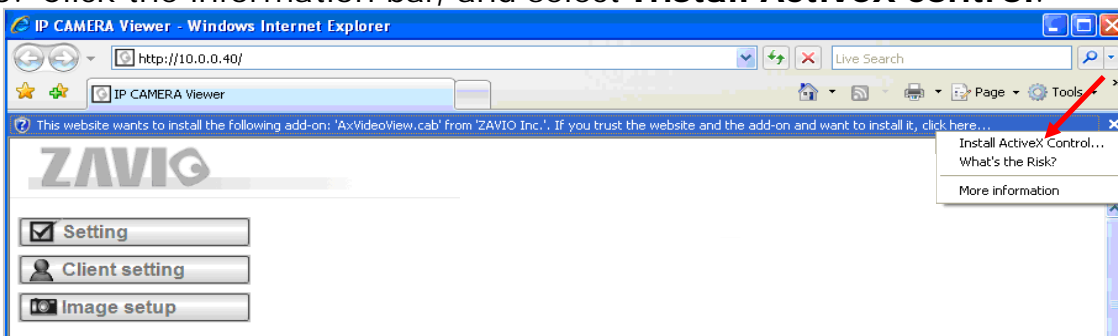
3. Enter Username and Password to login to the IP Camera.
(Default is admin / admin)



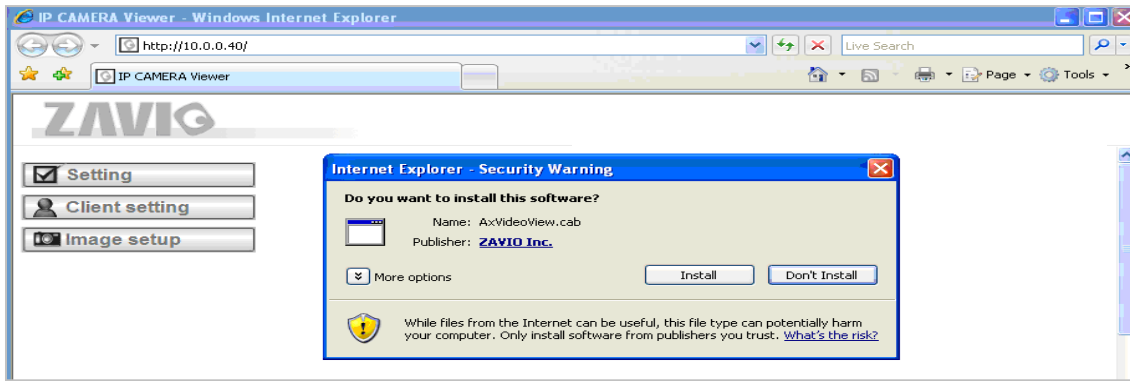
4. When accessing the IP Camera for the first time, a yellow information bar appears below the address bar: **This website wants to install the following add-on: AxvideoView.cab from 'Zavio Inc'.**



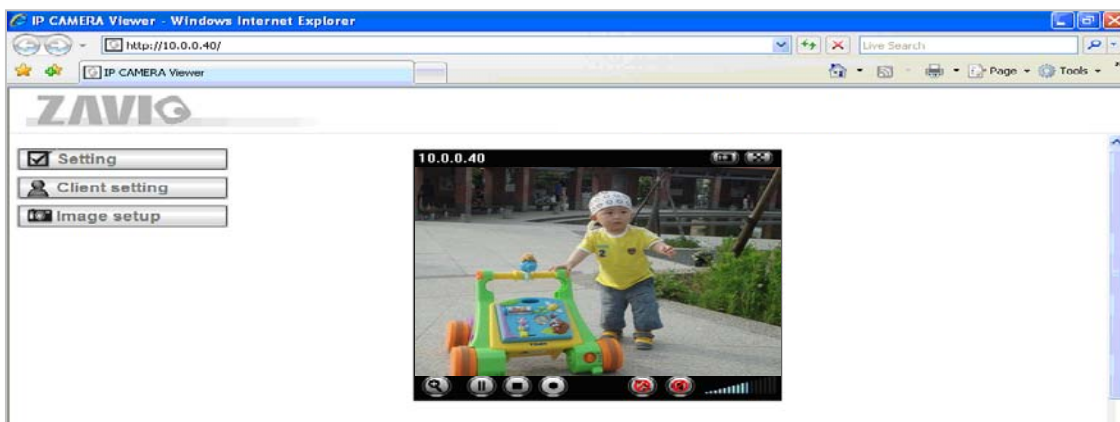
5. Click the information bar, and select **Install ActiveX control**.



6. Click **Install**

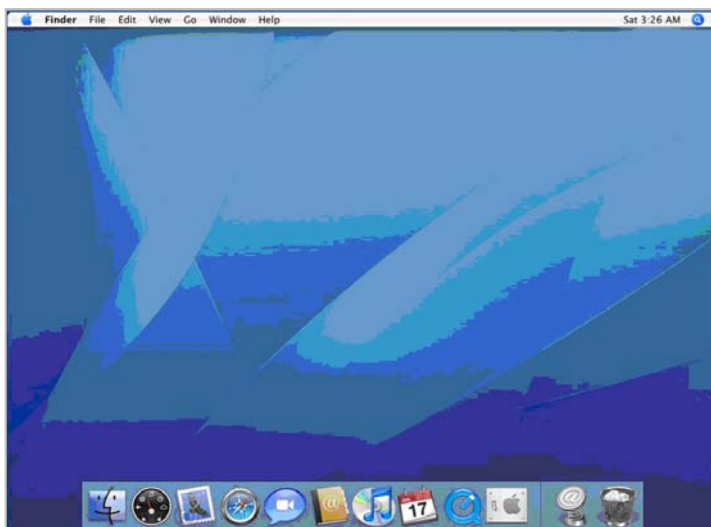


7. Live video will display in the center of your web browser.

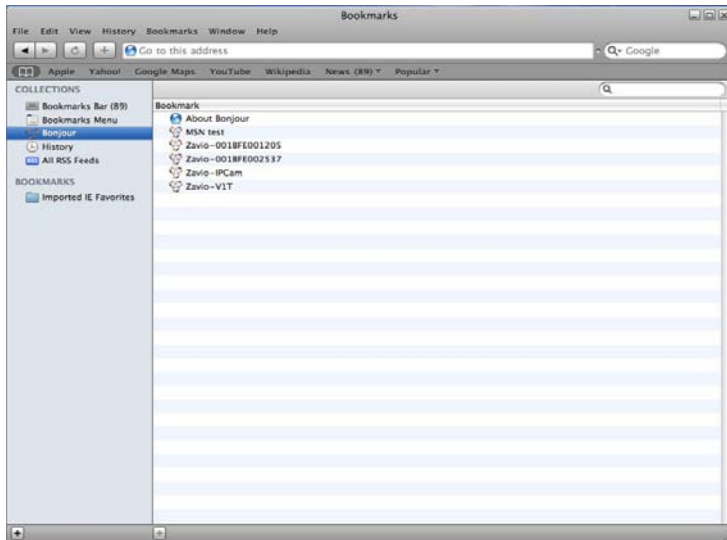


MAC OS using Safari Browser

1. Select **Safari Icon**



2. Click **Bonjour** function and select the camera you wish to access.



3. Enter name and password to login to the IP camera.
(Default is admin / admin)

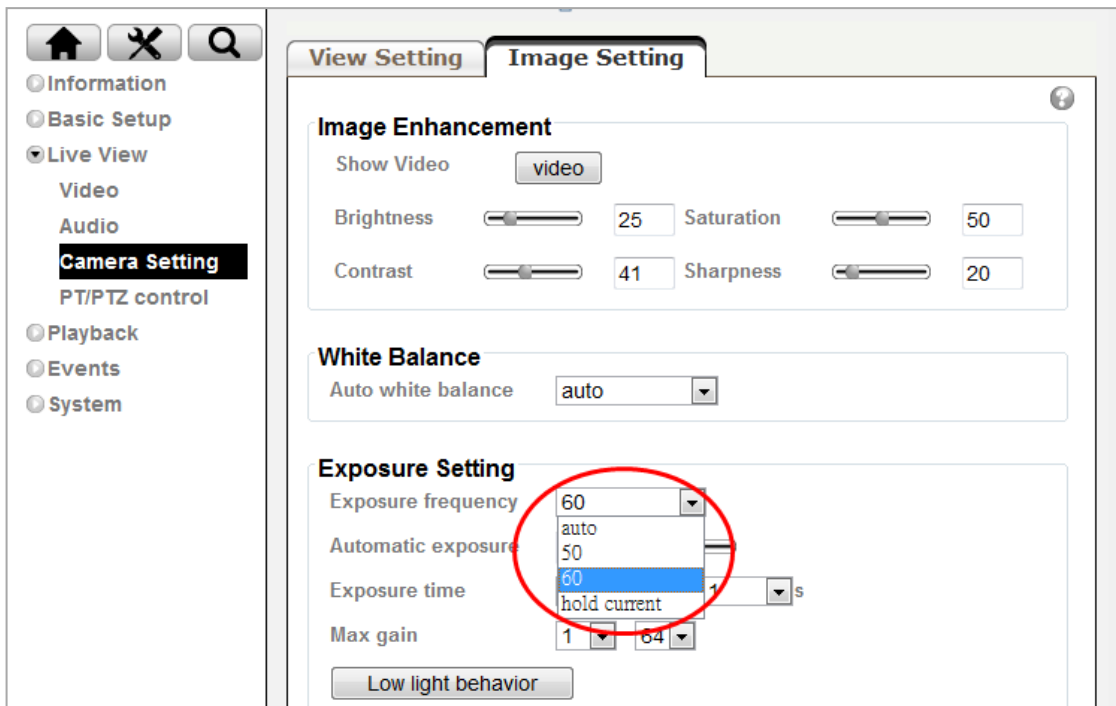


4. Live video will display in the center of your web browser.



Lighting environment setting

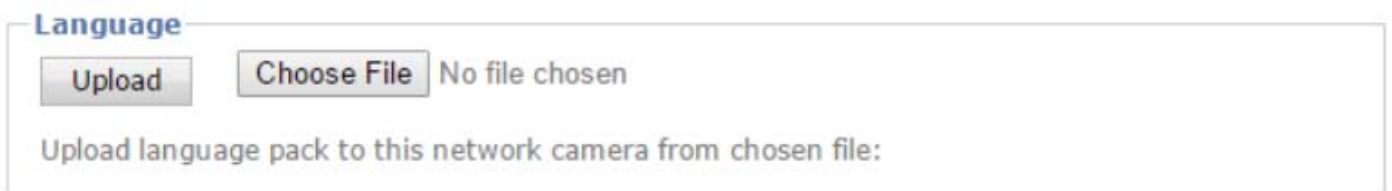
Default setting for lighting environment is Auto. You may change exposure frequency to 50 or 60 Hz at *Setting > Live View > Camera Setting > Image Setting*.



Change the Web Interface into your preferred language

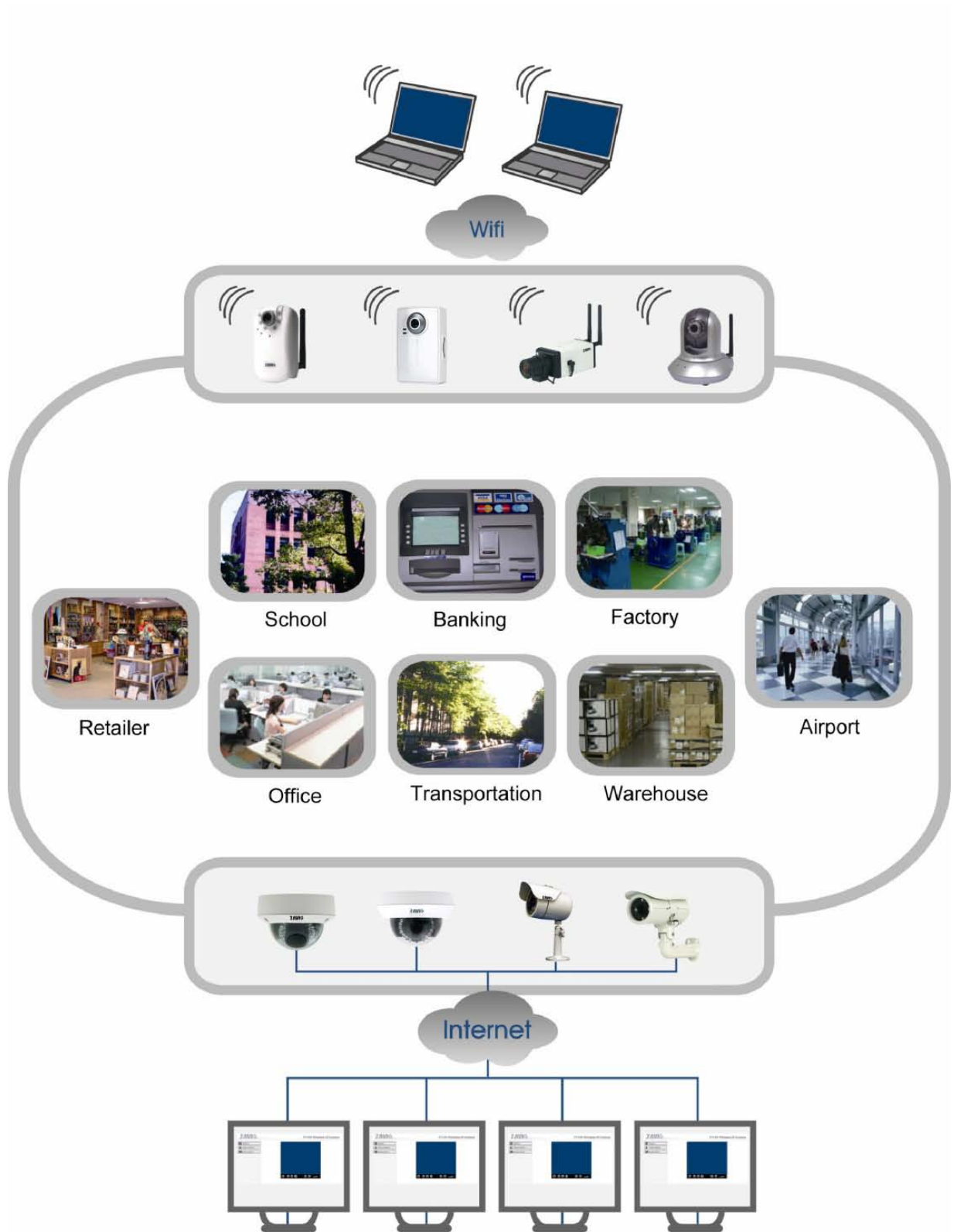
Before accessing the Setting page to change the language of the web interface, you must download the language pack.

1. Go to <http://www.zavio.com/downloads.php> and download the language pack corresponding to your IP camera model.
2. Go to the IP camera setting page and upload the preferred language from the language pack downloaded from step 1.
Setting > System > Maintenance > Language > Upload



3. Once the upload is complete, the browser will automatically change the language.

Application of IP Camera



Memo

A series of horizontal dotted lines for writing a memo.