



F210A
Quick Installation Guide

Zavio F210A Quick Installation Guide

Please follow the installation steps below to set up your F210A IP Camera.

Check the package contents against the list below. *See P.1*

Physical overview. *See P.1*

Install the hardware and connect all cables. *See P.2*

Microsoft OS: Use the software CD to install Intelligent IP Installer. *See P.2*

Access the IP Camera using Intelligent IP Installer. *See P.2*

Mac OS using Safari Browser. *See P.4*

Change light environment setting. *See P.5*

Change the Web Interface into your preferred language. *See P.5*

Using IP Camera via Mobile Phone. *See P.5*

Windows Live Messenger Setting. *See P.6*

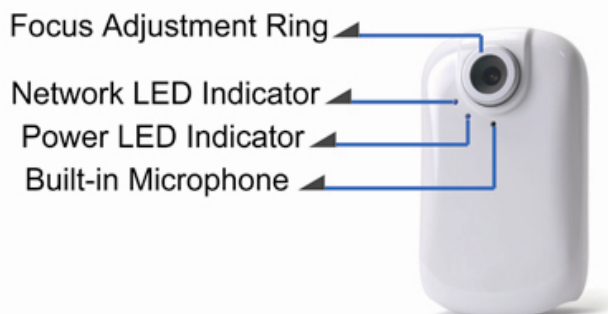
Access to Internet via Static IP, Dynamic IP or both. *See P.8*

For more information, please check the User Manual available in the Software CD or you can download the latest software from <http://www.zavio.com>

Package Contents

Camera	F210A IP Camera
Quick Installation Guide	Brief product information and quick installation
Software CD	IP Surveillance Software Intelligent IP Installer User Manuals Language Packs
Mounting Bracket	Three screws, Lock ring, Brace, and Base plate
Adaptor	5V DC, max 4.5W

Physical overview



Focus Adjustment Ring: Adjust the focus ring to get a clear image.

Reset: When the device is empowered, press the Reset Button to reboot the device, or hold the Reset Button for 10 seconds to set the settings back to factory default

Install the hardware and connect all cables

a. Wall mounting and Ceiling mounting

1. Use the 3 supplied screws to fix the base plate to a flat surface.
2. Loosen the lock ring to adjust the desired angle of the camera.
3. Tighten the lock ring.



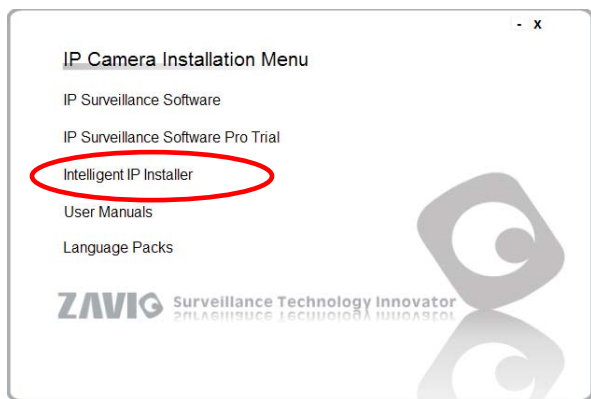
b. Connect all cables

1. Use a standard RJ-45 network cable to connect the IP Camera to the Network connection
2. Connect power adaptor to the IP Camera.

Microsoft OS: Using the software CD to install Intelligent IP Installer

Power on your PC and insert the CD-ROM. The setup page will show up automatically. Please follow those steps to install the firmware.

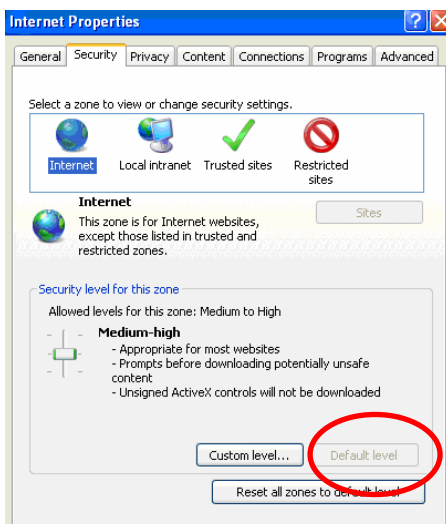
Select **“Intelligent IP Installer”** and follow the installation process to complete the installation.



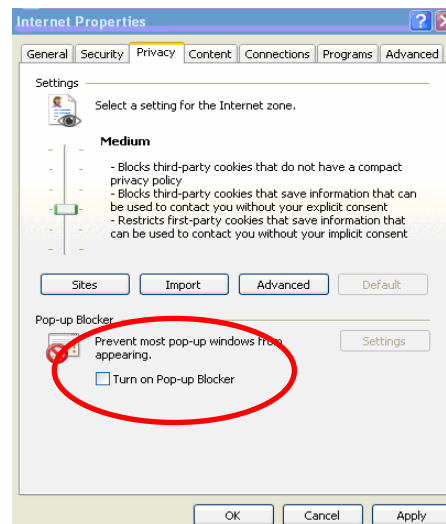
Access the IP Camera using Intelligent IP Installer

1. Before using Intelligent IP Installer, please check two setting.

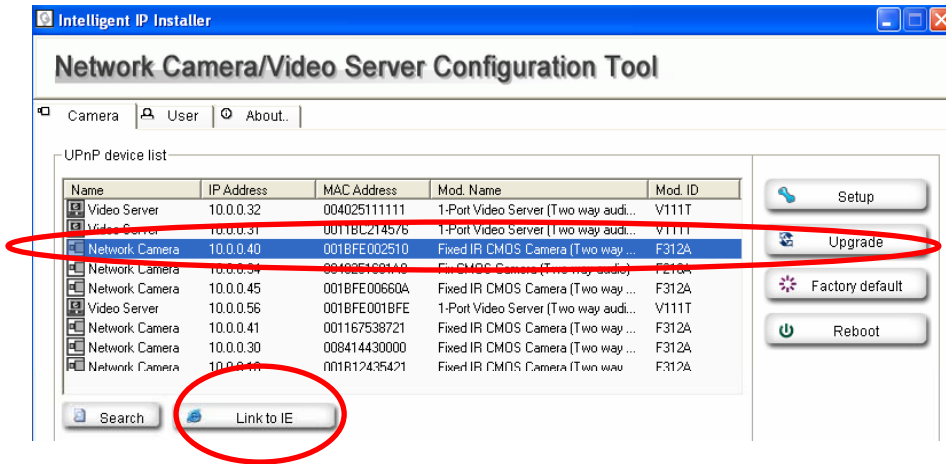
a. Browser's Internet Properties → Security
→ **Default Level**



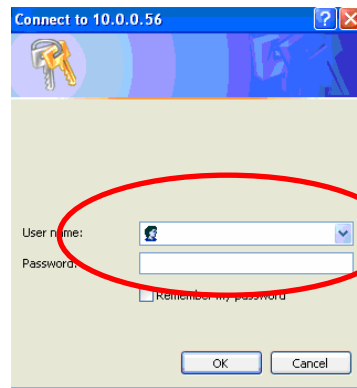
b. Browser's Internet Properties → Privacy
→ **Uncheck Pop-up Blocker**



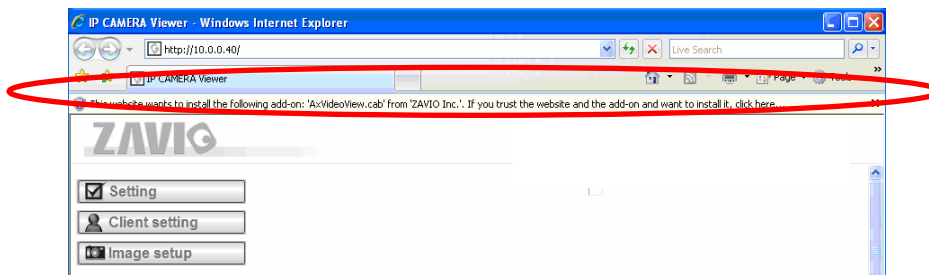
2. Click the Intelligent IP Installer ICON on your desktop. The main page will show up listing all active camera and video server devices. Select the relevant IP camera from the list and click **Link to IE**.



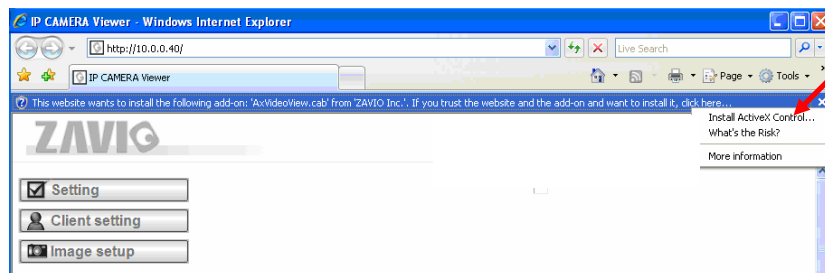
3. Enter your Username and Password to login to the IP Camera.
(Default is admin / admin)



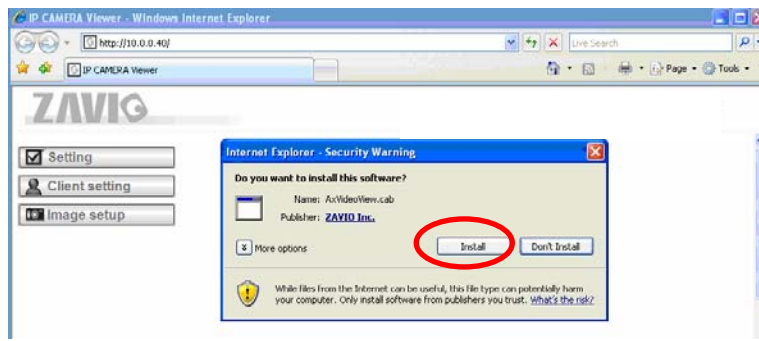
4. When accessing the IP Camera for the first time, a yellow information bar appears below the address bar: **This website wants to install the following add-on: 'AxvideoView.cab' from 'Zavio Inc'.**



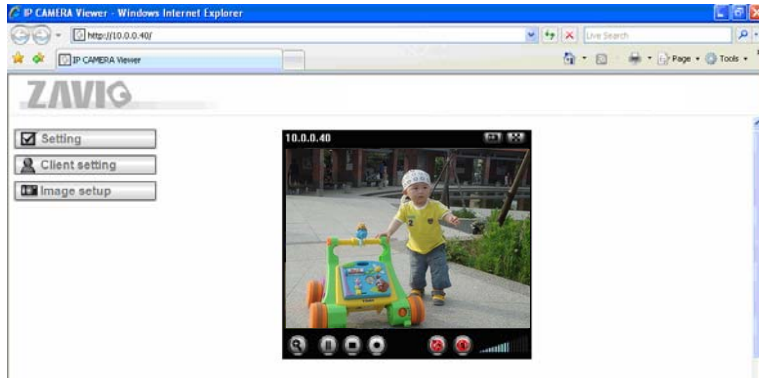
5. Click the information bar, and select **Install ActiveX control**.



6. Click **Install**.



7. Live video displays in the centre of your web browser.

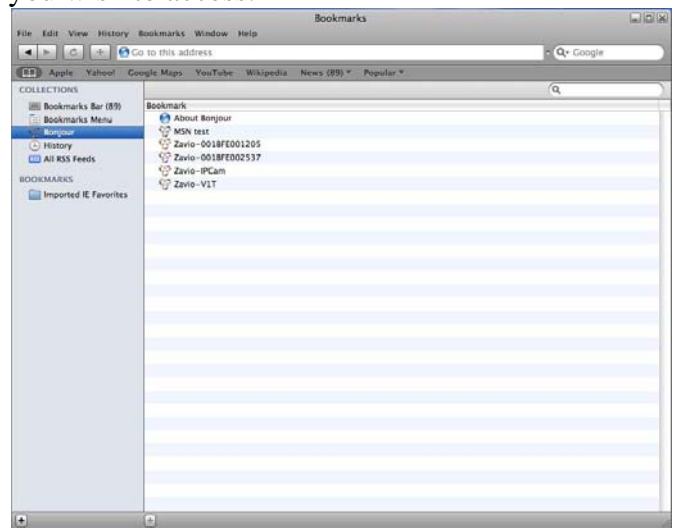


Mac OS using Safari Browser

1. Select **Safari icon**



2. Click **Bonjour function** and select the camera you wish to access.



3. Enter name and password to login to the IP camera. (**Default is admin / admin**)



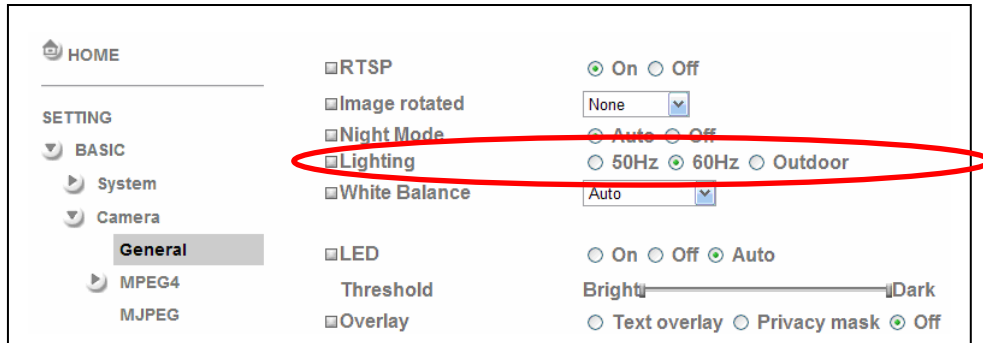
4. The monitor image will be displayed in your browser.



Change light environment setting

The default setting of lighting environment is 60Hz. However, if the image appears flickery, this might be because the lighting environment in your country is 50 Hz. Hence, this setting can be changed into 50Hz. Or if you wish to use this IP Camera in an outdoor environment, this setting can be changed into Outdoor mode.

Go to “Setting → Basic → Camera → General”, choose the environment setting you wish.

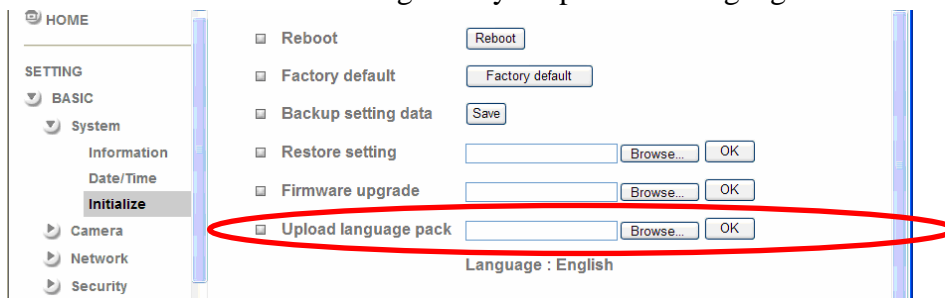


Change the Web Interface into your preferred language

Use the settings screen to set the language of the Web Interface.

Go to “Setting → Basic → System → Initialize”.

1. Insert Software CD into your CD-ROM.
2. Browse and select the preferred language from language pack in the Software CD and then click OK.
3. The web interface will change into your preferred language.



Use IP Camera via Mobile Phone

1. Using IP Camera via iPhone

Select Safari function → Enter IP address in the web link → enter username and password (**default value admin/admin**) → The Zavio user interface and Live Image will show up in the middle of the screen.

2. Mobile phone viewing

a. 3G Mobile Phone Streaming Viewing

For 3G mobile phone viewing, please type “**rtsp://<IP>:<PORT>/video.3gp**” into your 3G web media player.

<IP> is the IP address of your IP camera;

<PORT> is the RTSP port of your IP camera (Default value is 554.)

Example: rtsp://100.10.10.1:554/video.3gp

b. 2.5G Mobile Phone Viewing

b1. WAP viewing

For 2.5G WAP mobile phone viewing, type “**http://<IP>/mobile.wml**” into your 2.5G web browser.

b1. Browser viewing

For 2.5G mobile phone browser viewing, type “**http://<IP>/mobile.htm**” into your 2.5G web browser.

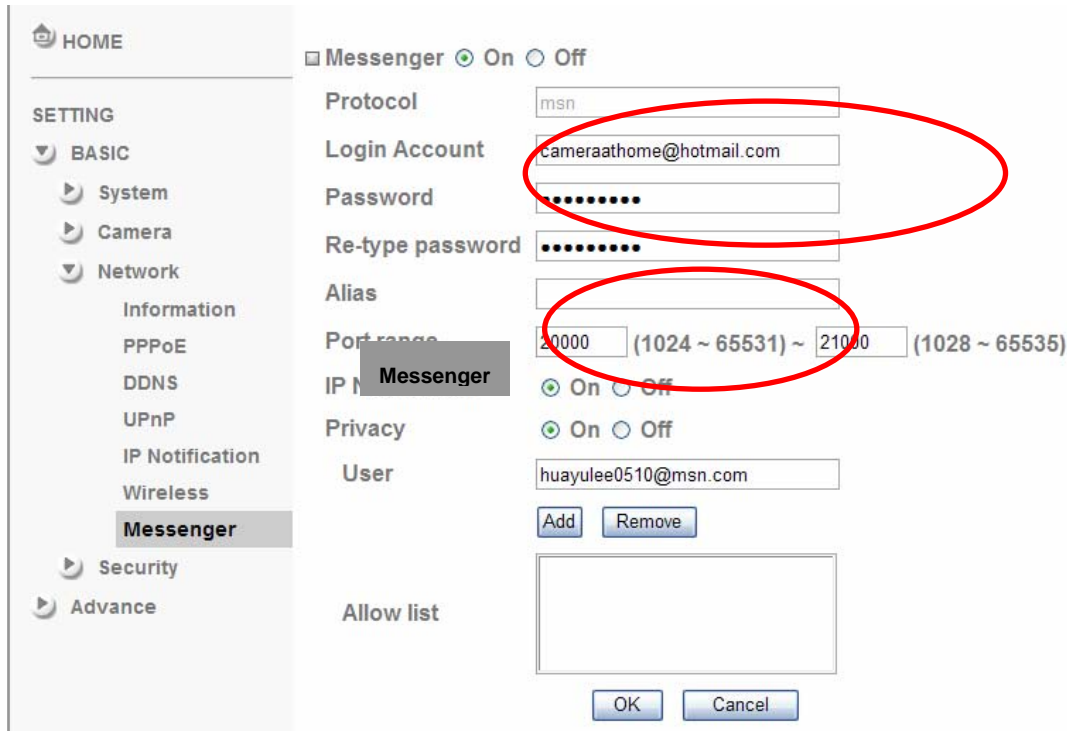
Windows Live Messenger Setting

Live video of the IP Camera can be displayed using Microsoft Live Messenger, whilst providing its public IP address to users for access via the web browser. This feature is useful especially when the IP address of the camera is dynamically assigned.

If you wish to set up MSN Messenger, enter the camera's setting page.

Go to "Setting → Basic → System → Network → Messenger", set the Messenger option "On."

1. Create a new MSN Messenger account (e.g.: **Camera at home**) for the IP Camera.
2. Enter the new MSN Messenger **Login Account** and **Password** within the designated boxes.
3. Under the **IP Notification Option**, Click "**On**" to enable IP notification to the users.
4. Under the **Privacy** Option, Click "On" to create an allow list.

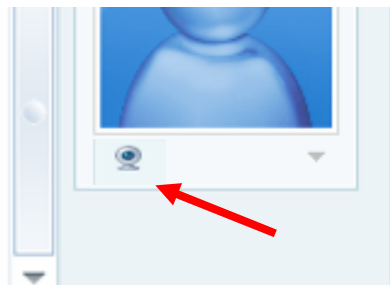


5. Use your existing account to login to MSN Messenger.
6. Add the new MSN Messenger account (e.g.: **Camera at home**) to your contact list.
7. The IP Camera will send you a message with its Public IP and Private IP if the IP Notification Option is enabled.
8. Click on the small camera icon. Then, choose "View a new contact's webcam".

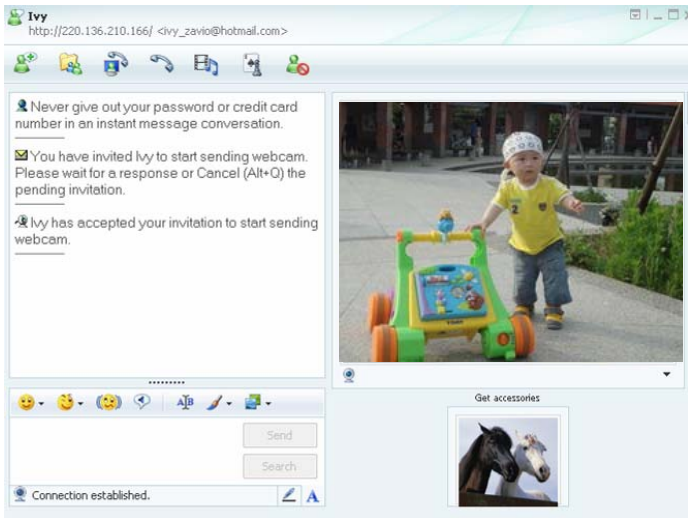
Camera at home says:

My Public IP: 122.124.4.150
URL: <http://122.124.4.150/>

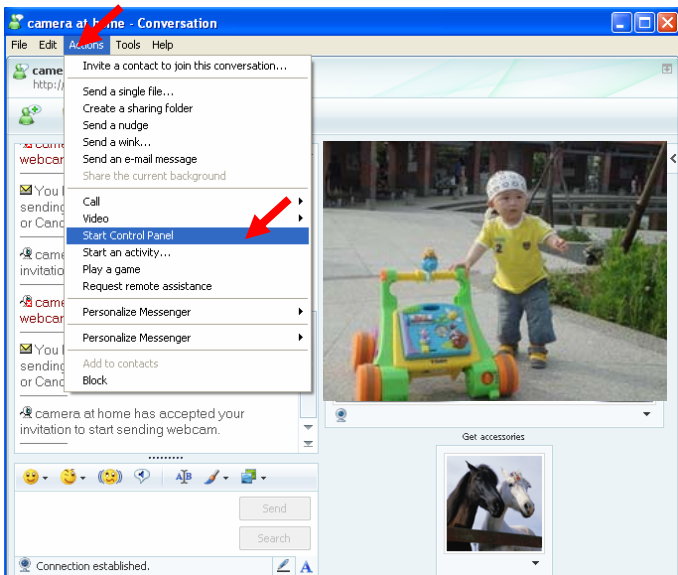
Wired-Private IP: 10.0.0.45
URL: <http://10.0.0.45/>



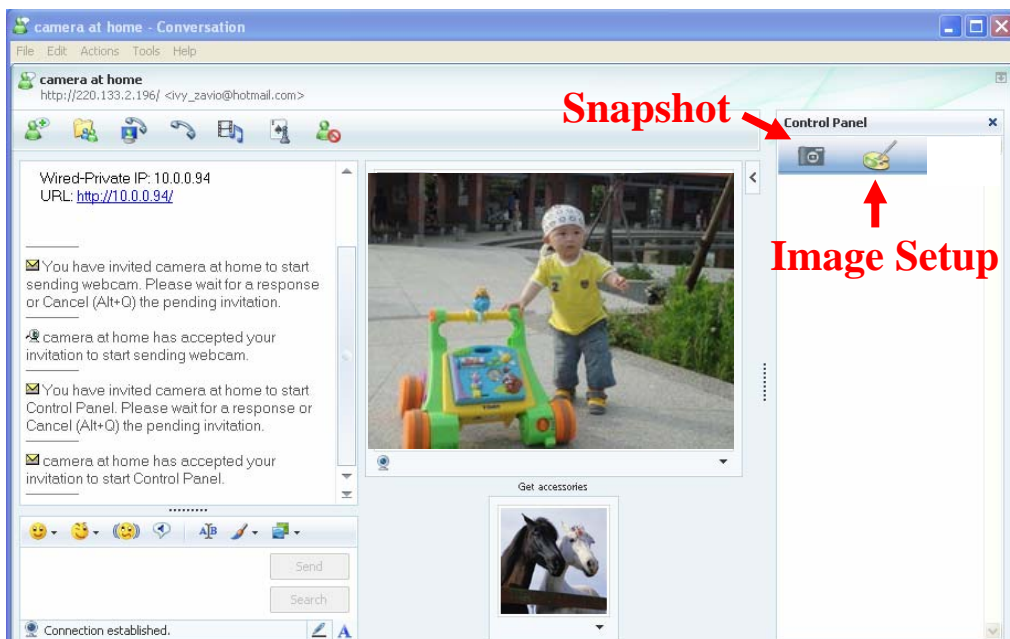
9. The IP Camera automatically accepts your invitation and its live video displayed.



10. Click **Action** button and choose **Start control panel** to use control panel



11. You can use **Snapshot**, **Image Setup** function via MSN add-in control panel.



Access to Internet

a. Internet connectivity of the IP camera can be established by inputting the cameras IP information within the **Information** section.

(Please go to **Setting** → **Basic** → **Network**→ **Information**)

The screenshot shows the 'Information' configuration page. On the left is a navigation menu with 'HOME' at the top, followed by 'SETTING', 'BASIC', 'System', 'Camera', 'Network', 'Information' (highlighted), 'PPPoE', 'DDNS', 'UPnP', 'Bonjour', 'IP Notification', 'Wireless', 'Messenger', 'Security', and 'Advance'. The main content area has a checkbox for 'MAC address' with the value '00:1B:FE:00:6B:E6'. Below it are two radio button options: 'Obtain an IP address automatically (DHCP)' (unselected) and 'Use the following IP address' (selected). Under the selected option are three text input fields: 'IP address' (10.0.0.60), 'Subnet mask' (255.255.255.0), and 'Default gateway' (10.0.0.1). Below these are two more radio button options: 'Use the following DNS server address' (selected) and 'HTTP port number' (unselected). Under the selected DNS option are two text input fields: 'Primary DNS server' (168.95.192.1) and 'Secondary DNS server' (168.95.1.1). Under the unselected HTTP port option are two radio buttons: '80' (selected) and an empty box, with '(1024 to 65535)' to the right. At the bottom are 'OK' and 'Cancel' buttons.

b. Internet Connectivity of the IP Camera can be established through PPPoE (Point-to-Point Protocol over the Ethernet) by inputting the username and password from your Internet Service Provider (ISP) within the **PPPoE** section.

(Please go to **Setting** → **Basic** → **Network**→ **PPPoE**)

Note 1: Please reboot the IP Camera, after changing the PPPoE settings.

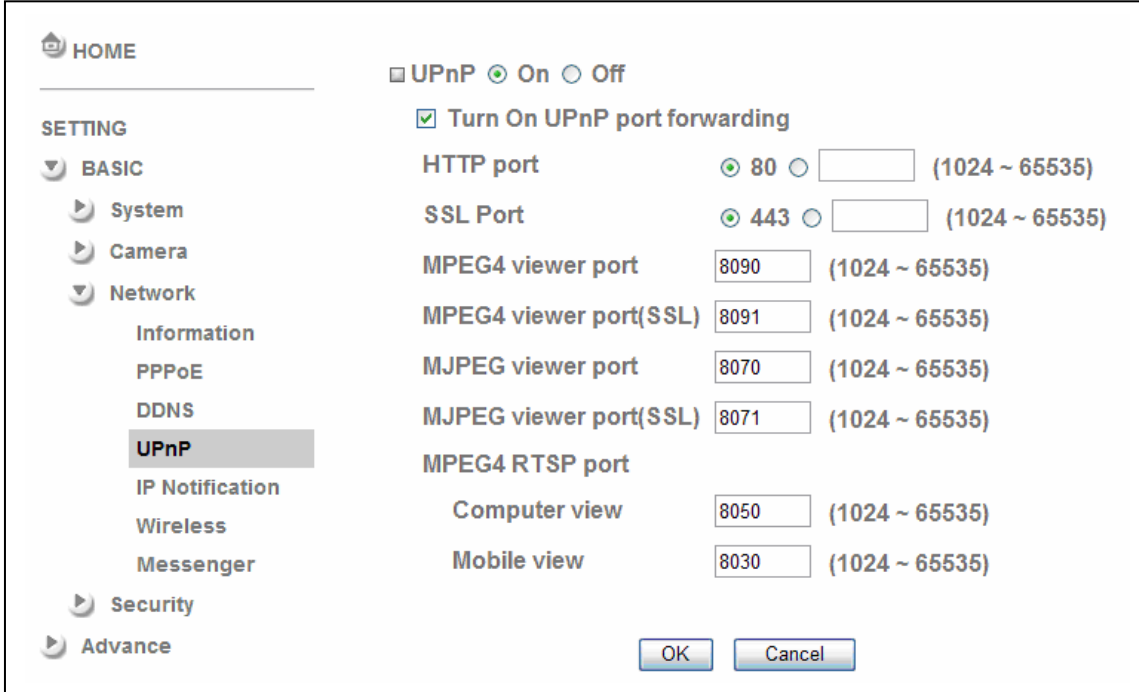
Note 2: Please turn on the DDNS and IP Notification function when using PPPoE.

The screenshot shows the 'PPPoE' configuration page. On the left is a navigation menu with 'HOME' at the top, followed by 'SETTING', 'BASIC', 'System', 'Camera', 'Network', 'Information', 'PPPoE' (highlighted), 'DDNS', 'UPnP', 'IP Notification', 'Wireless', 'Messenger', 'Security', and 'Advance'. The main content area has a checkbox for 'PPPoE' which is checked, with radio buttons for 'On' (selected) and 'Off'. Below it are four text input fields: 'IP address' (0.0.0.0), 'User ID' (71959519@hinet.net), 'Password' (masked with dots), and 'Re-type password' (masked with dots). Below these are two radio button options: 'Obtain DNS server address automatically' (selected) and 'Use the following DNS server address' (unselected). At the bottom are 'OK' and 'Cancel' buttons.

c. Internet Connectivity of the IP Camera can be established if your router is UPnP (Universal Plug and Play) enabled. The IP camera is automatically detected and added to “My Network Places” on your computer. *Please note that only Home Routers manufactured after 2006 support the UPnP function.*

c1. If your router is a UPnP Internet Gateway Device (IGD), turn on the **UPnP function** within the UPnP section. (Please go **Setting** → **Basic** → **Network**→ **UPnP**)

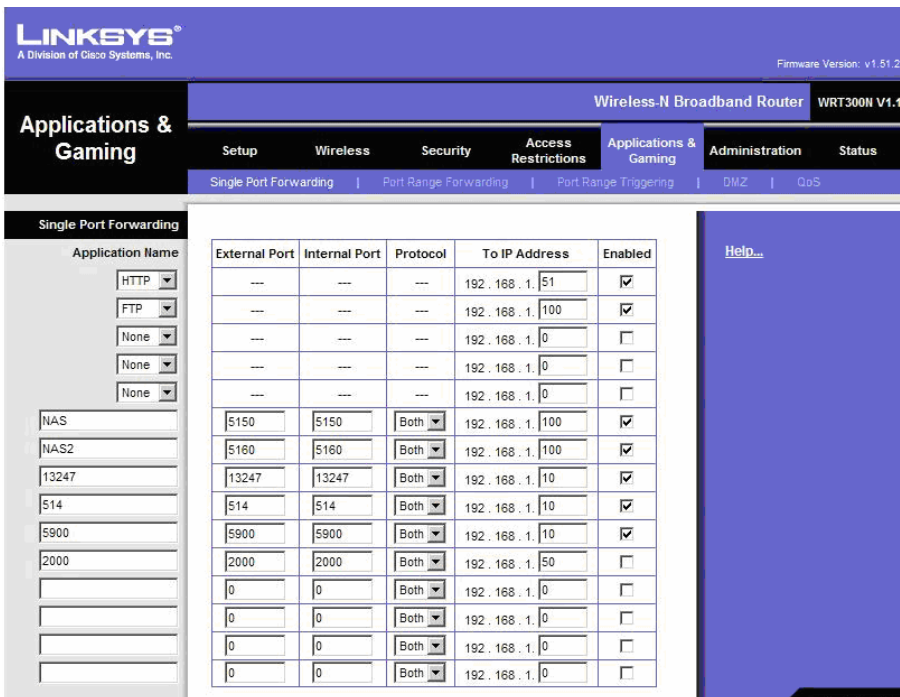
Note: If you turn on the UPnP Port Forwarding function, RTSP (Real Time Streaming Protocol) Port information will change to the illustrated value below.



c2. If your router is not a UPnP Internet Gateway Device, please setup Port Forwarding or Port Mapping

Note 1: Home Routers manufactured before 2006 do not support UPnP IGD function.

Note 2: Enterprise Routers do not support UPnP IGD function.



Memo

A series of horizontal dotted lines for writing a memo.



Memo

A series of horizontal dotted lines for writing the memo.

