

F611E IP Box Camera



Quick Installation Guide

System Requirements

- Windows 98, ME, 2000, 2003, XP or Vista
- Browser : Internet Explorer 6.0 or above.

Product Feature

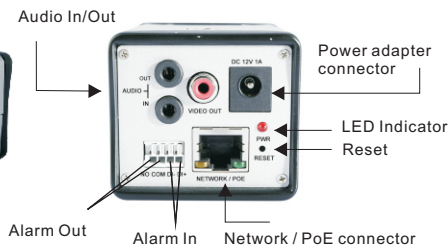
- MJPEG / MPEG-4 Dual Streaming
- Two-way Audio
- UPnP
- 3GPP
- External Alarm Input/Output

Front Panel



Fixed Iris Lens

Rear Panel



Audio In/Out, Alarm Out, Alarm In, Network / PoE connector, Power adapter connector, LED Indicator, Reset

The Quick Installation Guide provides basic instructions for F611E. If you need more advanced instructions, please refer to the User's Manual.

Check Your Package Contents

- F611E IP Box Camera
- Power Adapter
- Quick Installation Guide
- CD-Rom
- Lens
- Camera Stand

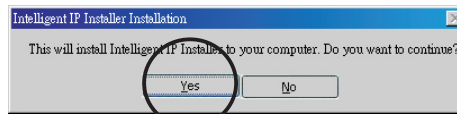
Using the Software CD to configure the camera

Power on your PC and insert the CD-ROM. The setup page should load automatically. If it does not, please select your CD-ROM drive manually to open the setup page.

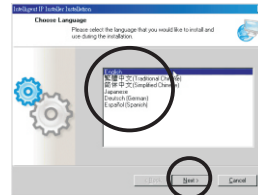
Select "Intelligent IP Installer"



1. Click "Yes" to initiate the installation



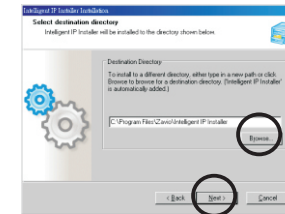
2. Select the language you want to install, and click "Next".



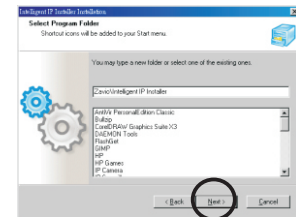
3. Click "Next" to start the installation



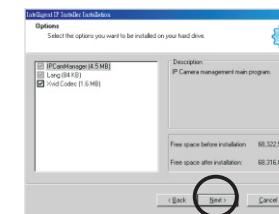
4. If you wish to install the software program in an alternative location, click "Browse", otherwise click "Next" to move on to the next step.



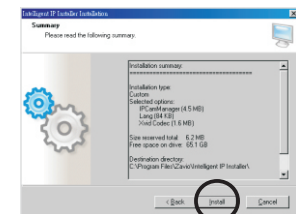
5. Click "Next" to proceed.



6. Choose the install options, click "Next" to proceed.



7. Click "Install" to start the installation.



8. Click "Finish" to complete the installation.



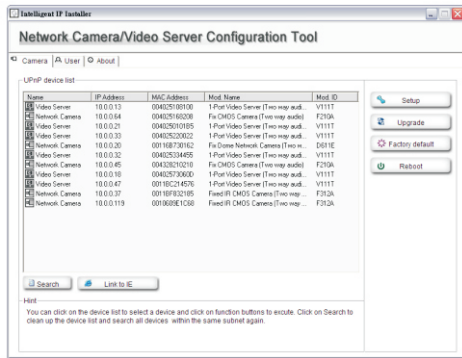
www.zavio.com

Surveillance Technology Innovator

Using Intelligent IP Installer

Launch the program after installation
The following screen shall show up

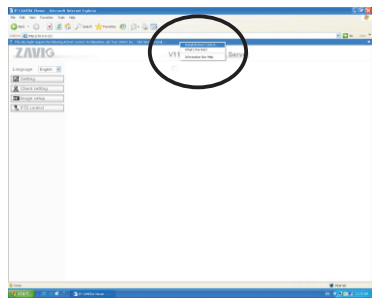
Camera Menu



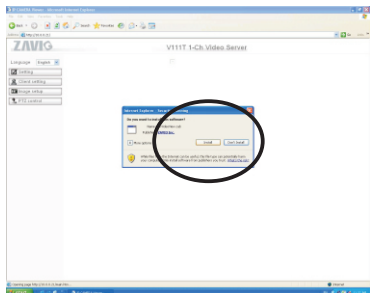
1. The camera list on the left will show all active devices.
2. Select your camera, Click on "Link to IE" to use the camera through Internet Explorer.

- 5 -

2. Click on the message and select **Install ActiveX Control**.



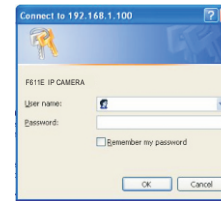
3. Click Install to **Install ActiveX**.



- 8 -

3. Enter User name and Password to login to the IP Camera. (Default is admin/admin)

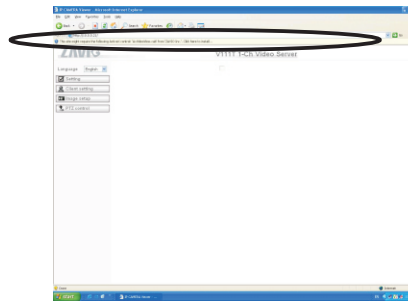
Default: admin/admin



- * **Viewing Video with your F611E**

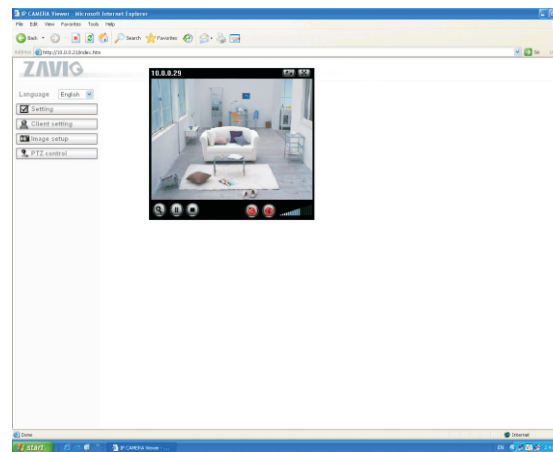
The following screen shall appear automatically after successful login.

1. The first time using your ZAVIO IP Camera , you will see the following message:
"This site might require the following ActiveX control:'AxvideoView.cab' from 'ZAVIO Inc.'"



- 6 -

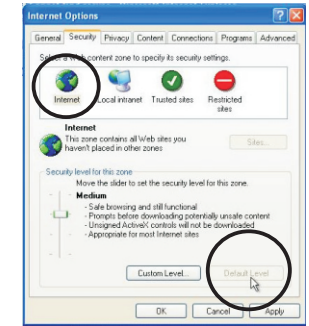
4. Congratulations, you can now use the camera to view high-quality video through your web browser.



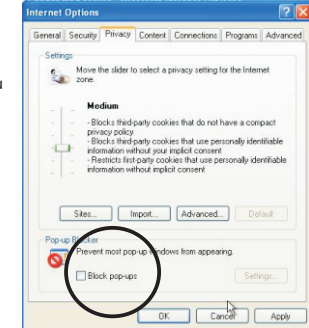
- 9 -

Note:
If you don't see this message, please check your browser's internet settings.

- (1) Browser's **Internet Options**
→ **Security** → **Default Level**



- (2) Browser's **Internet Options**
→ **Privacy** → **Uncheck Block pop-ups** temporary when you use it for the first time.



- 7 -